

PRODUCT CATALOGUE

 2022





CONTENT

OQ	4	OQL	32
OQ 40/24.....	6	OQL 310	34
OQ 45-5 / OQ 45-4.....	8	OQL 410.....	36
OQ 60-5 / 60-4	10	OQT	38
OQ 65	12	OQT 300i.....	40
OQ 70	14	OQT 850i-55	42
OQ 70/55.....	16	OQT 850i-90	44
OQ 80.....	18	OQC	46
OQ 90	20	GRAB JOHN	48
OQ 120	22	OQC40M	49
OQTR	24	OQLS	50
OQTR-E14	26	OEM	51
OQTR-E19	27	Systemlösning.....	52
OQTR-E26	28	CE-märkning	53
OQTR-E33	29	Service	54
Control systems	30	Kvalitet.....	54
Gripmodul	31	ISO 9001.....	55
		Miljö	55
		Kontakt	57
		Sociala medier	59





SWITCH HYDRAULIC ATTACHMENTS IN 10 SECONDS!

OilQuick is an automatic quick coupler system for excavators that can couple hydraulic attachments directly from the cab. The operator can rapidly switch between different types of attachment, such as hydraulic hammers, steel and concrete shears, sorting grapples, hydraulic magnets, compactors, sorting buckets, tilt buckets, tiltrotators and more. This means always using the right attachment for the job.

OilQuick is one of the most advanced quick coupler system on the market and is available for excavators between 1 and 120 tonnes. The OilQuick system makes your excavator and your company more versatile, more competitive and more profitable!

Comes with our OQLS security system as standard. Read more in the chapter "OQLS".



OQ 40/24

OQ 40/24 is a fully automatic quick coupler system suitable for all mini excavators weighing **1-5 tonnes** and enables rapid attachment switching between mechanical and hydraulic attachments. The coupler has 4 hydraulic quick couplings.

The coupler is robust, fits perfectly and can handle rough treatment. Optional electrical connector for control electronics.

ADVANTAGES OF OILQUICK

- Reduces the number of machines on demolition sites.
- Protected hose routing on machine and attachments.
- No personnel around the machine when switching attachments.
- Switch hydraulic attachments in seconds.
- Reduces transport costs.
- Always the right attachment for the job.
- Eliminates oil leaks.
- Increased safety.
- Increased productivity.
- Increased profitability.





TECHNICAL DATA OQ 40/24

Max. breaking torque (kNm)	16
Bucket radius (mm)	500
Force at bucket blade (kN)	32
Width (mm)	240
Weight (kg)	ca 32

The coupler has two parallel hydraulic cylinders

Max. operating pressure (MPa)	35
Load holding/hose rupture valves	Yes

Leak-free steel quick couplings, OilQuick type

Coupling dimensions	3/8"	1/2"
Oil flow with 0.3 MPa pressure drop (L/min)	40	70
Max. continuous operating pressure (MPa)	35	35
Number of couplings	2	2

MEASUREMENT DATA ATTACHMENT COMPONENTS



Mechanical frame

Internal width	241 mm
Pin spacing	300 mm
Pin diameter	40 mm
Weight	15 kg



Hydraulic frame

Internal width	241 mm
Pin spacing	300 mm
Pin diameter	40 mm
Weight	25 kg



Hydraulic adapter plate

Internal width	241 mm
Pin spacing	300 mm
Pin diameter	40 mm
Weight	ca 75 kg

OQ 45-5 / OQ 45-4

OQ 45-5 is a fully automatic quick coupler system suitable for all wheel excavators weighing 5-12 tonnes and excavators weighing 5-10 tonnes and enables rapid attachment switching between mechanical and hydraulic attachments. The coupler is robust, fits perfectly and can handle rough treatment.

OQ 45-5 is a further development of OQ 45-4 and has 5 hydraulic quick couplings instead of 4. OQ 45-4 is still available as the new version is not backwards compatible. The new version enables you to use attachments that require two hydraulic functions and a separate leakage line. Optional electrical connector for control electronics.

ADVANTAGES OF OILQUICK

- Reduces the number of machines on demolition sites.
- Protected hose routing on machine and attachments.
- No personnel around the machine when switching attachments.
- Switch hydraulic attachments in seconds.
- Reduces transport costs.
- Always the right attachment for the job.
- Eliminates oil leaks.
- Increased safety.
- Increased productivity.
- Increased profitability.





TECHNICAL DATA OQ 45-5 & 45-4

Quick coupler	45-5	45-4
Max. breaking torque (kNm)	70	70
Bucket radius (mm)	600	600
Force at bucket blade (kN)	120	120
Width (mm)	290	290
Weight (kg)	ca 85	ca 85

The coupler has two parallel hydraulic cylinders

Max. operating pressure (MPa)	35	35
Load holding/hose rupture valves	Yes	Yes
Pressure relief valves	Yes	Yes

Leak-free steel quick couplings, OilQuick type

Coupling dimensions	3/8"	1/2"	1/2"
Oil flow with 0.3 MPa pressure drop (L/min)	40	70	70
Max. continuous operating pressure (MPa)	35	35	35
Number of couplings	3	2	4

MEASUREMENT DATA ATTACHMENT COMPONENTS



Mechanical frame

Internal width	291 mm
Pin spacing	430 mm
Pin diameter	45 mm
Weight	25 kg



Hydraulic frame

Internal width	291 mm
Pin spacing	430 mm
Pin diameter	45 mm
Weight	37 kg



Hydraulic adapter plate

Internal width	291 mm
Pin spacing	430 mm
Pin diameter	45 mm
Weight	102 kg

OQ 60-5 / 60-4

OQ 60-5 is a fully automatic quick coupler system suitable for all medium-sized excavators weighing 12-18 tonnes and enables rapid attachment switching between mechanical and hydraulic attachments. The coupler is robust, fits perfectly and can handle rough treatment. OQ 60-5 is a further development of OQ 60-4 and has 5 hydraulic quick couplings instead of 4.

OQ 60-4 is still available as the new version is not backwards compatible. OQ 60-5 enables you to use attachments that require two hydraulic functions and a separate leakage line. Optional electrical connector for control electronics.

ADVANTAGES OF OILQUICK

- Reduces the number of machines on demolition sites.
- Protected hose routing on machine and attachments.
- No personnel around the machine when switching attachments.
- Switch hydraulic attachments in seconds.
- Reduces transport costs.
- Always the right attachment for the job.
- Eliminates oil leaks.
- Increased safety.
- Increased productivity.
- Increased profitability.





TECHNICAL DATA OQ 60-5 & 60-4

Quick coupler	60-5	60-4
Max. breaking torque (kNm)	150	150
Bucket radius (mm)	800	800
Force at bucket blade (kN)	190	190
Width (mm)	340	340
Weight (kg)	approx. 125	approx. 125

The coupler has two parallel hydraulic cylinders

Max. operating pressure (MPa)	35	35
Load holding/hose rupture valves	Yes	Yes
Pressure relief valves	Yes	Yes

Leak-free steel quick couplings, OilQuick type

Coupling dimensions	3/8"	1/2"	3/4"	1/2"	3/4"
Oil flow with 0.3 MPa pressure drop (L/min)	40	70	140	70	140
Max. continuous operating pressure (MPa)	35	35	35	35	35
Number of couplings	2	1	2	2	2

MEASUREMENT DATA ATTACHMENT COMPONENTS



Mechanical frame

Internal width	341 mm
Pin spacing	480 mm
Pin diameter	60 mm
Weight	40 kg



Hydraulic frame

Internal width	341 mm
Pin spacing	480 mm
Pin diameter	60 mm
Weight	62 kg



Hydraulic adapter plate

Internal width	341 mm
Pin spacing	480 mm
Pin diameter	60 mm
Weight	190 kg



Pendeladapter

Internal width	341 mm
Pin spacing	480 mm
Pin diameter	60 mm
Weight	see identification plate on adapter

OQ 65

OQ 65 is a fully automatic quick coupler system to suit all medium sized excavators from 8-18 tons and allow for quick tool changes between mechanical and hydraulic attachments. OQ 65 has 5 hydraulic quick couplers and provides the ability to use tools that require two separate hydraulic and leakage management. Optional electrical connector.

ADVANTAGES OF OILQUICK

- Reduces the number of machines on demolition sites.
- Protected hose routing on machine and attachments.
- No personnel around the machine when switching attachments.
- Switch hydraulic attachments in seconds.
- Reduces transport costs.
- Always the right attachment for the job.
- Eliminates oil leaks.
- Increased safety.
- Increased productivity.
- Increased profitability.





TECHNICAL DATA OQ65

Max. breaking torque (kNm)	240
Bucket radius (mm)	1050
Force at bucket blade (kN)	230
Width (mm)	440
Weight (kg)	approx. 170

The coupler has two parallel hydraulic cylinders

Max. operating pressure (MPa)	35
Load holding/hose rupture valves	Yes
Pressure relief valves	Yes

Leak-free steel quick couplings, OilQuick type

Coupling dimensions	1/2"	3/4"	1"
Oil flow with 0.3 MPa pressure drop (L/min)	70	140	250
Max. continuous operating pressure (MPa)	35	35	35
Number of couplings	2	3	-

MEASUREMENT DATA ATTACHMENT COMPONENTS



Mechanical frame

Internal width	440 mm
Pin spacing	530 mm
Pin diameter	65 mm
Weight	65 kg



Hydraulic frame

Internal width	440 mm
Pin spacing	530 mm
Pin diameter	65 mm
Weight	75 kg



Hydraulic adapter plate

Internal width	440 mm
Pin spacing	530 mm
Pin diameter	65 mm
Weight	240 kg



Pendeladapter

Internal width	440 mm
Pin spacing	530 mm
Pin diameter	70 mm
Weight	see identification plate on adapter

OQ 70

OQ 70 is a fully automatic quick coupler system suitable for all medium-sized excavators weighing **15-28 tonnes** and enables rapid attachment switching between mechanical and hydraulic attachments. The coupler is robust, fits perfectly and can handle rough treatment. OQ 70 enables you to use attachments that require two hydraulic functions and a separate leakage line. Optional electrical connector for control electronics.

ADVANTAGES OF OILQUICK

- Reduces the number of machines on demolition sites.
- Protected hose routing on machine and attachments.
- No personnel around the machine when switching attachments.
- Switch hydraulic attachments in seconds.
- Reduces transport costs.
- Always the right attachment for the job.
- Eliminates oil leaks.
- Increased safety.
- Increased productivity.
- Increased profitability.





TECHNICAL DATA OQ 70

Max. breaking torque (kNm)	320
Bucket radius (mm)	1250
Force at bucket blade (kN)	255
Width (mm)	450
Weight (kg)	ca 210

The coupler has two parallel hydraulic cylinders

Max. operating pressure (MPa)	35
Load holding/hose rupture valves	Yes
Pressure relief valves	Yes

Leak-free steel quick couplings, OilQuick type

Coupling dimensions	1/2"	3/4"	1"
Oil flow with 0.3 MPa pressure drop (L/min)	70	140	250
Max. continuous operating pressure (MPa)	35	35	35
Number of couplings	2	1	2

MEASUREMENT DATA ATTACHMENT COMPONENTS



Mechanical frame

Internal width	451 mm
Pin spacing	600 mm
Pin diameter	70 mm
Weight	78 kg



Hydraulic frame

Internal width	451 mm
Pin spacing	600 mm
Pin diameter	70 mm
Weight	110 kg



Hydraulic adapter plate

Internal width	451 mm
Pin spacing	600 mm
Pin diameter	70 mm
Weight	322 kg



Pendeladapter

Internal width	451 mm
Pin spacing	600 mm
Pin diameter	70 mm
Weight	see identification plate on adapter

OQ 70/55

OQ 70/55 is a fully automatic quick coupler system to suit all medium sized excavators from 18 to 28 t and allow for quick tool changes between mechanical and hydraulic attachments. The coupler is sturdy, backlash-free and can withstand tough treatment. OQ 70/55 provides the ability to use tools that require two separate hydraulic and leakage management. Optional electrical connector.

ADVANTAGES OF OILQUICK

- Reduces the number of machines on demolition sites.
- Protected hose routing on machine and attachments.
- No personnel around the machine when switching attachments.
- Switch hydraulic attachments in seconds.
- Reduces transport costs.
- Always the right attachment for the job.
- Eliminates oil leaks.
- Increased safety.
- Increased productivity.
- Increased profitability.





TECHNICAL DATA OQ 70/55

Attachment coupler

Max. breaking torque (kNm)	450
Bucket radius (mm)	1550
Force at bucket blade (kN)	290
Width (mm)	550
Weight (kg)	approx. 230

The coupler has two parallel hydraulic cylinders

Max. operating pressure (MPa)	35
Load holding/hose rupture valves	Yes
Pressure relief valves	Yes

Leak-free steel quick couplings, OilQuick type

Coupling dimensions	1/2"	3/4"	1"
Oil flow with 0.3 MPa pressure drop (L/min)	70	140	250
Max. continuous operating pressure (MPa)	35	35	35
Number of couplings	2	2	2

MEASUREMENT DATA ATTACHMENT COMPONENTS



Mechanical frame

Internal width	550 mm
Pin spacing	600 mm
Pin diameter	70 mm
Weight	90 kg



Hydraulic frame

Internal width	550 mm
Pin spacing	600 mm
Pin diameter	70 mm
Weight	100 kg



Hydraulic adapter plate

Internal width	550 mm
Pin spacing	600 mm
Pin diameter	70 mm
Weight	325 kg



Pendeladapter

Internal width	550 mm
Pin spacing	600 mm
Pin diameter	80 mm
Weight	see identification plate on adapter

OQ 80

OQ 80 is a fully automatic quick coupler system suitable for all excavators weighing **28-40 tonnes** and enables rapid attachment switching between mechanical and hydraulic attachments. The coupler is robust, fits perfectly and can handle rough treatment. OQ 80 enables you to use attachments that require two hydraulic functions and a separate leakage line. The coupler also has an additional coupling for use with central lubrication, flushing and similar functions. Optional electrical connector for control electronics.

ADVANTAGES OF OILQUICK

- Reduces the number of machines on demolition sites.
- Protected hose routing on machine and attachments.
- No personnel around the machine when switching attachments.
- Switch hydraulic attachments in seconds.
- Reduces transport costs.
- Always the right attachment for the job.
- Eliminates oil leaks.
- Increased safety.
- Increased productivity.
- Increased profitability.





TECHNICAL DATA OQ 80

Max. breaking torque (kNm)	700
Bucket radius (mm)	1850
Force at bucket blade (kN)	380
Width (mm)	590
Weight (kg)	ca 320

The coupler has two parallel hydraulic cylinders

Max. operating pressure (MPa)	35
Load holding/hose rupture valves	Yes
Pressure relief valves	Yes

Leak-free steel quick couplings, OilQuick type

Coupling dimensions	1/2"	3/4"	1"
Oil flow with 0.3 MPa pressure drop (L/min)	70	140	250
Max. continuous operating pressure (MPa)	35	35	35
Number of couplings	2	2	2

MEASUREMENT DATA ATTACHMENT COMPONENTS



Mechanical frame

Internal width	591 mm
Pin spacing	670 mm
Pin diameter	80 mm
Weight	128 kg



Hydraulic frame

Internal width	591 mm
Pin spacing	670 mm
Pin diameter	80 mm
Weight	175 kg



Hydraulic adapter plate

Internal width	591 mm
Pin spacing	670 mm
Pin diameter	80 mm
Weight	445 kg



Pendeladapter

Internal width	591 mm
Pin spacing	670 mm
Pin diameter	80 mm
Weight	see identification plate on adapter

OQ 90

OQ 90 is a robust quick coupler system suitable for large excavators weighing **40-70 tonnes**. The coupler fits perfectly and is suitable for demanding use in demolition/deconstruction. The coupler is suitable for use with hydraulic attachments that require large oil flows, such as hydraulic hammers, sorting grapples, steel/concrete shears, magnets and stone cutters. Optional electrical connector for control electronics.

ADVANTAGES OF OILQUICK

- Reduces the number of machines on demolition sites.
- Protected hose routing on machine and attachments.
- No personnel around the machine when switching attachments.
- Switch hydraulic attachments in seconds.
- Reduces transport costs.
- Always the right attachment for the job.
- Eliminates oil leaks.
- Increased safety.
- Increased productivity.
- Increased profitability.





TECHNICAL DATA OQ 90

Max. breaking torque (kNm)	900
Bucket radius (mm)	1850
Force at bucket blade (kN)	485
Width (mm)	750
Weight (kg)	ca 630

The coupler has two parallel hydraulic cylinders

Max. operating pressure (MPa)	35
Load holding/hose rupture valves	Yes
Pressure relief valves	Yes

Leak-free steel quick couplings, OilQuick type

Coupling dimensions	3/8"	1/2"	3/4"	1"
Oil flow with 0.3 MPa pressure drop (L/min)	12	70	140	250
Max. continuous operating pressure (MPa)	40	35	35	35
Number of couplings	1	3	1	4

MEASUREMENT DATA ATTACHMENT COMPONENTS



Mechanical frame

Internal width	751 mm
Pin spacing	750 mm
Pin diameter	90 mm
Weight	190 kg



Hydraulic frame

Internal width	751 mm
Pin spacing	750 mm
Pin diameter	90 mm
Weight	240 kg



Hydraulic adapter plate

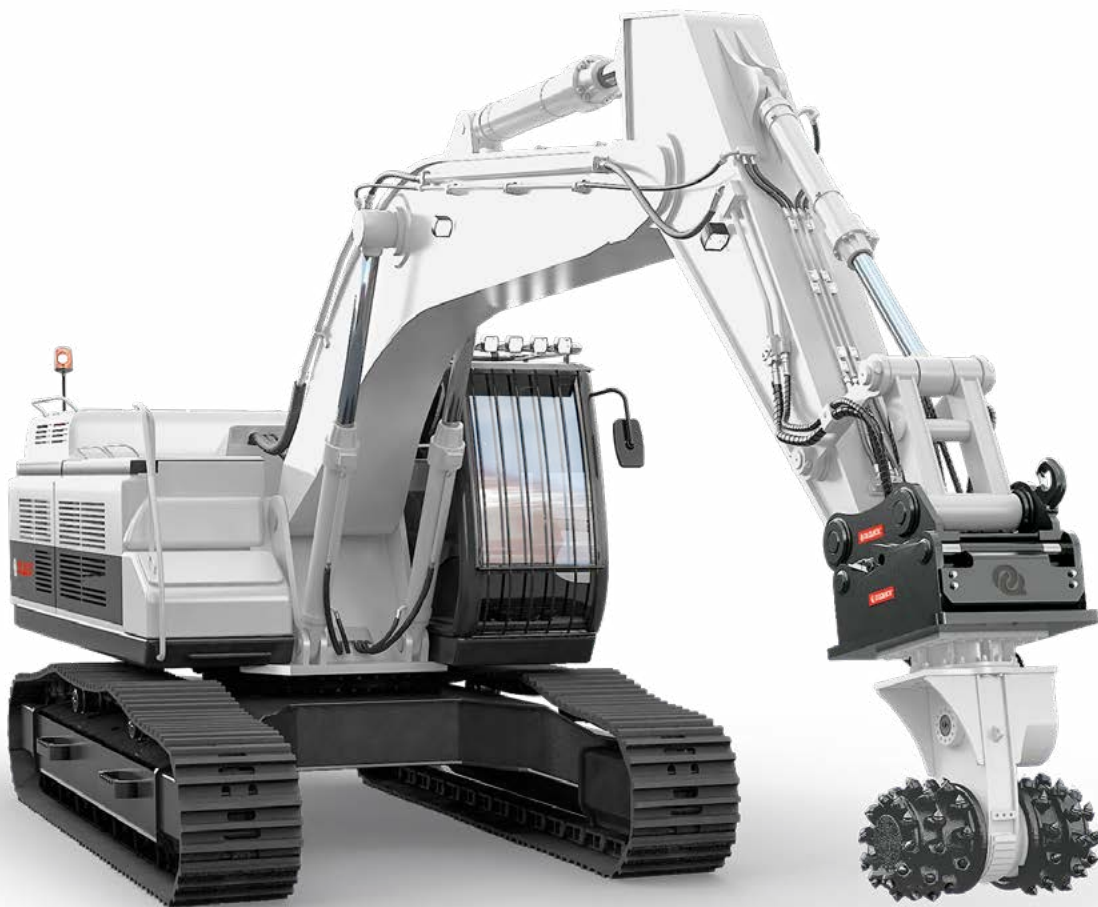
Internal width	751 mm
Pin spacing	750 mm
Pin diameter	90 mm
Weight	710 kg

OQ 120

OQ 120 is an automatic quick coupler system for large excavators weighing 70-120 tonnes. The coupler fits perfectly and can handle rough treatment. The coupler is suitable for use with hydraulic attachments that require large oil flows, such as hydraulic hammers, sorting grapples, steel/concrete shears, magnets and stone cutters.

ADVANTAGES OF OILQUICK

- Reduces the number of machines on demolition sites.
- Protected hose routing on machine and attachments.
- No personnel around the machine when switching attachments.
- Switch hydraulic attachments in seconds.
- Reduces transport costs.
- Always the right attachment for the job.
- Eliminates oil leaks.
- Increased safety.
- Increased productivity.
- Increased profitability.





TECHNICAL DATA OQ 120

Max. breaking torque (kNm)	1250
Bucket radius (mm)	1850
Force at bucket blade (kN)	675
Width (mm)	870
Weight (kg)	ca 1200

The coupler has two parallel hydraulic cylinders

Max. operating pressure (MPa)	35
Load holding/hose rupture valves	Yes
Pressure relief valves	Yes

Leak-free steel quick couplings, OilQuick type

Coupling dimensions	1/2"	1"	1½"
Oil flow with 0.3 MPa pressure drop (L/min)	70	250	700
Max. continuous operating pressure (MPa)	35	35	35
Number of couplings	3	3	2

MEASUREMENT DATA ATTACHMENT COMPONENTS



Mechanical frame

Internal width	871 mm
Pin spacing	925 mm
Pin diameter	120 mm
Weight	555 kg



Hydraulic frame

Internal width	871 mm
Pin spacing	925 mm
Pin diameter	120 mm
Weight	640 kg



Hydraulic adapter plate

Internal width	871 mm
Pin spacing	925 mm
Pin diameter	120 mm
Weight	1395 kg

OQTR

A FLEXIBLE AND CAPABLE HYDRAULIC TILTROTATOR!

OilQuick Tiltrotator is a hydraulic joint that turns your excavator into a flexible and capable multi-tasker. By integrating OilQuick's automatic quick coupler technology both above and below the tiltrotator, it can not only rotate and tilt but also rapidly couple hydraulic attachments.

The OilQuick adapter on the top enables the tiltrotator to be quickly and easily removed for direct use of, for example, a standard bucket, frost ripper or hydraulic hammer. This means maximum digging capacity, breaking force and function, as well as always using the right attachment for the job.





OQTR-E14



For smaller excavators and wheel excavators weighing **9-14** tonnes. Rotates continuously and can be equipped with different control systems to suit customer requirements. An OilQuick tiltrotator is easily detached in 10 seconds before switching to an attachment for heavier work.

TECHNICAL DATA

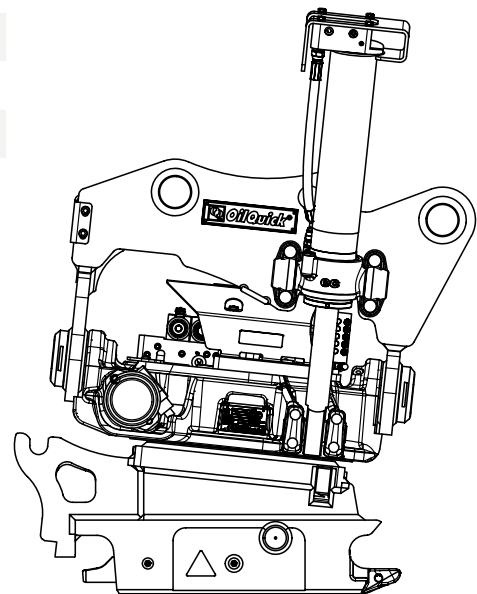
Min/max machine weight	9000 - 14 000 kg
Weight	Fr. 470 kg - 520 kg
Max. breaking torque	126 kNm
Max. bucket width	1600 mm
Max. hydraulic pressure	22 MPa
Rec. hydraulic flow DC2	80 L/min
Rec. hydraulic flow tilt/rotation OQCS-4	35/50 L/min
Max. return line pressure	2,5 MPa
Max. hydraulic flow extra/high flow	70/100* L/min
Swivel channel extra function	4 st
Swivel channel locking function	2 st
Rotation	Unlimited
Tilt angle	2x45°
Tilting speed at hydraulic flow	3/40 s/L/min
Rotation speed for one rotation at hydraulic flow	7/50 s/L/min
Standard dimension extra outlet	1/2" , 3/4"
No. of lubrication points	5 st, standard
No. of lubrication points through OQ-function	4 st, option
Rotation sensor and ePS	Yes, standard
Tilt cylinder, double acting with load holding valve	Yes, standard

Control system

DC2	✓
DC2 wheel control	Option
DC2 track control	Option
OQCS-4	✓

Machine requirements

	DC2	OQCS-4
One single acting hydraulic circuit	✓	
Two double acting hydraulic circuits		✓



* 70 L/min via 1/2" on OQ45-4, OQ45-5, S45.
100 L/min via 3/4" on OQ60-4, OQ60-5, S60.

OQTR-E19



For smaller excavators and wheel excavators weighing **14-19** tonnes. Rotates continuously and can be equipped with different control systems to suit customer requirements. An OilQuick tiltrotator is easily detached in 10 seconds before switching to an attachment for heavier work.

TECHNICAL DATA

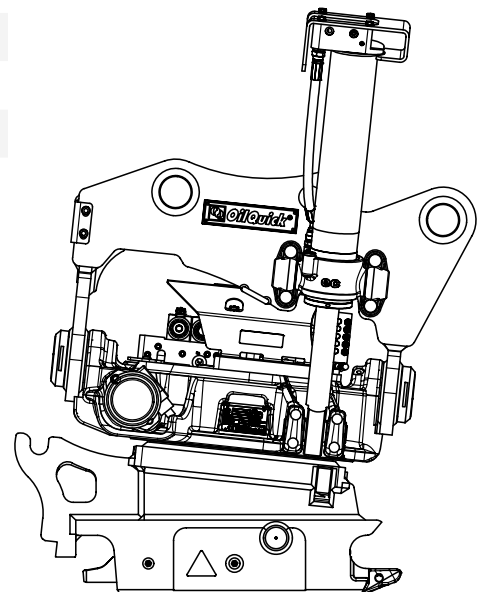
Min/max machine weight	14 000 - 19 000 kg
Weight	Fr. 600 kg
Max. breaking torque	186 kNm
Max. bucket width	1700 mm
Max. hydraulic pressure	22 MPa
Rec. hydraulic flow DC2	120 L/min
Rec. hydraulic flow tilt/rotation OQCS-4	65/70 L/min
Max. return line pressure	2,5 MPa
Max. hydraulic flow extra/high flow	100 L/min
Swivel channel extra function	4 st
Swivel channel locking function	2 st
Rotation	Unlimited
Tilt angle	2x45°
Tilting speed at hydraulic flow	3/65 s/L/min
Rotation speed for one rotation at hydraulic flow	6,5/70 s/L/min
Standard dimension extra outlet	3/4"
No. of lubrication points	5 st, standard
No. of lubrication points through OQ-function	4 st, option
Rotation sensor and ePS	Yes, standard
Tilt cylinder, double acting with load holding valve	Yes, standard

Control system

DC2	✓
DC2 wheel control	Option
DC2 track control	Option
OQCS-4	✓

Machine requirements

	DC2	OQCS-4
One single acting hydraulic circuit	✓	
Two double acting hydraulic circuits		✓



* 70 L/min via 1/2" on OQ45-4, OQ45-5, S45.
100 L/min via 3/4" on OQ60-4, OQ60-5, S60.

OQTR-E26



For smaller excavators and wheel excavators weighing **19-26** tonnes. Rotates continuously and can be equipped with different control systems to suit customer requirements. An OilQuick tiltrotator is easily detached in 10 seconds before switching to an attachment for heavier work.

TECHNICAL DATA

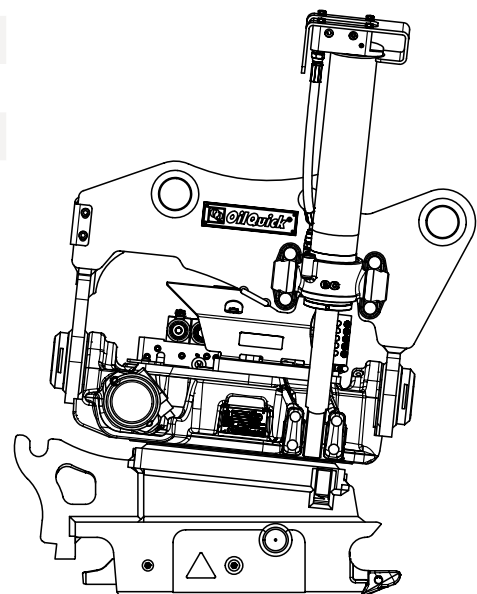
Min/max machine weight	19 000 - 26 000 kg
Weight	Fr. 840 kg
Max. breaking torque	270 kNm
Max. bucket width	2000 mm
Max. hydraulic pressure	22 MPa
Rec. hydraulic flow DC2	120 L/min
Rec. hydraulic flow tilt/rotation OQCS-4	70/70 L/min
Max. return line pressure	2,5 MPa
Max. hydraulic flow extra/high flow	100 L/min
Swivel channel extra function	4 st
Swivel channel locking function	2 st
Rotation	Unlimited
Tilt angle	2x45°
Tilting speed at hydraulic flow	5/43 s/L/min
Rotation speed for one rotation at hydraulic flow	7/70 s/L/min
Standard dimension extra outlet	1"
No. of lubrication points	5 st, standard
No. of lubrication points through OQ-function	4 st, option
Rotation sensor and ePS	Yes, standard
Tilt cylinder, double acting with load holding valve	Yes, standard

Control system

DC2	✓
DC2 wheel control	Option
DC2 track control	Option
OQCS-4	✓

Machine requirements

	DC2	OQCS-4
One single acting hydraulic circuit	✓	
Two double acting hydraulic circuits		✓



* 70 L/min via 1/2" on OQ45-4, OQ45-5, S45.
100 L/min via 3/4" on OQ60-4, OQ60-5, S60.

OQTR-E33



For smaller excavators and wheel excavators weighing **24-33** tonnes. Rotates continuously and can be equipped with different control systems to suit customer requirements. An OilQuick tiltrotator is easily detached in 10 seconds before switching to an attachment for heavier work.

TECHNICAL DATA

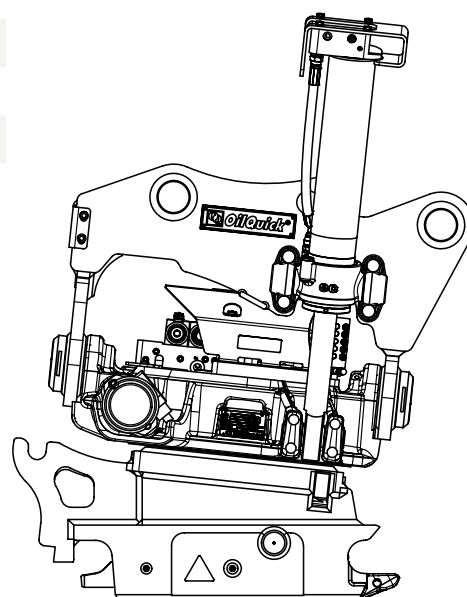
Min/max machine weight	24 000-33 000 kg
Weight	Fr. 1040 kg - 1200 kg
Max. breaking torque	340 kNm
Max. bucket width	2200 mm
Max. hydraulic pressure	25 MPa
Rec. hydraulic flow DC2	120 L/min
Rec. hydraulic flow tilt/rotation OQCS-4	70/70 L/min
Max. return line pressure	2,5 MPa
Max. hydraulic flow extra/high flow	100 L/min
Swivel channel extra function	4 st
Swivel channel locking function	2 st
Rotation	Unlimited
Tilt angle	2x45°
Tilting speed at hydraulic flow	5/63 s/L/min
Rotation speed for one rotation at hydraulic flow	7/100 s/L/min
Standard dimension extra outlet	1"
No. of lubrication points	5 st, standard
No. of lubrication points through OQ-function	4 st, option
Rotation sensor and ePS	Yes, standard
Tilt cylinder, double acting with load holding valve	Yes, standard

Control system

DC2	✓
DC2 wheel control	Option
DC2 track control	Option
OQCS-4	✓

Machine requirements

	DC2	OQCS-4
One single acting hydraulic circuit	✓	
Two double acting hydraulic circuits		✓



* 70 L/min via 1/2" on OQ45-4, OQ45-5, S45.
100 L/min via 3/4" on OQ60-4, OQ60-5, S60.

CONTROL SYSTEMS

DC2

The proportional DC2 system is suitable for all excavators. Options like wheel and track control can be added and is controlled via the joysticks. Connect your smartphone to DC2 with Bluetooth and switch between different driver profiles etc.

MIG2

MIG2 ergonomic joysticks are optimal for demanding use and in combination with DC2 a total of 6 rollers and 14 buttons on two joysticks can be used.

EPS

All models of OQTR-E is delivered with ePS as a standard and in combination with the GPS control system you get maximum control over the attached tools positioning.

OQ LOCK SUPPORT®

OQLS electronic monitoring system gives the driver confirmation that the attached tool is correctly locked.

GRAPPLE

The grapple is an effective grabbing and handling tool that makes your excavator even more versatile and can be used for most types of grapple work: Pipe laying, stone laying, lighter sorting work and more. The grapple module has rounded tines that close fully and can even be detached. Does not limit bucket manoeuvring when not in use.

- Tightly curved grapple tines (three) provide an extremely firm grip.
- Generous grapple opening – opens fully.
- Quickly attached/detached. Can be retrofitted to tiltrotators with a prepared coupler.
- Robust tines.
- Sturdy piston rods – generously sized to withstand wear and knocks.
- Minimalist design with no excess weight.
- Lubricate while attached or detach to avoid downtime.

TECHNICAL DATA

Grapple	GRD10	GRD20	GRD70	GRD30*
Grapple width	610 mm	820 mm	950 mm	1080 mm
Width	270 mm	355 mm	410 mm	440 mm
Lenght	720 mm	870 mm	900 mm	980 mm
Grapple force (jaw-jaw) at 21 MPa	1500 kg	2200 kg	2200 kg	1956 kg
Max. capacity	1500 kg	2000 kg	2000 kg	2200 kg
Weight	109 kg	143 kg	163 kg	148 kg
Max. hydraulic pressure	22 MPa	22 MPa	22 MPa	22 MPa

SUITABLE QUICK COUPLER

Modell	OQTR-E14	OQTR-E19	OQTR-E26	OQTR-E33
OQ45-4	✓			
OQ45-5	✓			
OQ60-4	✓	✓		
OQ60-5	✓	✓		
OQ70			✓	✓
OQ80				✓

OQL

HYDRAULIC QUICK COUPLERSYSTEM FOR LOADERS!

OQL is a quick coupler system for loaders that can couple hydraulic attachments directly from the cab. The operator can quickly switch between different types of attachment, such as timber grapples, high tip buckets, pallet forks with hydraulic tine adjustment, sweeper rollers, bale clamps, roll clamps and more. This means the right attachment for the job every time.

OilQuick is one of the most advanced quick coupler system for loaders on the market and is available in three different models for machines between 5 and 33 tonnes. The OilQuick system makes your loader and your company more versatile, more competitive and more profitable!





OQL 310

OilQuick automatic quick coupler system, type OQL310, is available for medium-sized wheel loaders weighing **6-20 tonnes**. The new, considerably improved coupler generation is fully backwards compatible with the older versions of OQL300. The couplers are now available in three different sizes: OQL310-1, OQL310-2 and OQL310-3. All couplers have the same attachment interface and are compatible with Volvo's standard coupler for the L50-L120 and other equivalent machine models.

ADVANTAGES OF OILQUICK

- Switch hydraulic attachments in seconds.
- Switching attachments with OilQuick means no oil spills, sparing the environment and saving money!
- Motivates a higher hourly rate – gets the job done faster.
- Increases usability and makes your machine more versatile.
- Always the right attachment for the job.
- Invest in an OilQuick and spare your back and your knees.





TECHNICAL DATA OQL 310

The coupler has one hydraulic cylinder

Max. operating pressure (MPa)	35
Load holding/hose rupture valves	Yes
Piston/piston rod, diameter (mm)	60/40
Stroke length per cylinder side (mm)	135
Combined lock force at 10 MPa	28.3
Max. continuous operating pressure (MPa)	35

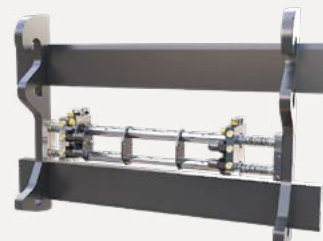
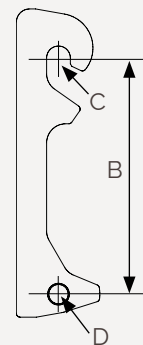
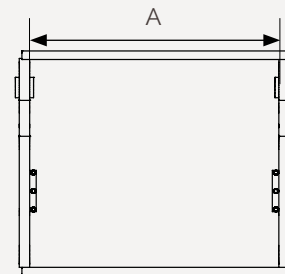
Leak-free steel quick couplings, OilQuick type

Coupling dimensions	1/2"	3/4"
Oil flow with 0.3 MPa pressure drop (L/min)	70	140
Max. continuous operating pressure (MPa)	35	35
Number of couplings	2	4
Electrical coupling option, 1/2"	Yes	

MEASUREMENT DATA ATTACHMENT FRAME

OQL 310

Inside measurement (A)	960 mm
Height (B)	617 mm
Diameter, mounting hooks (C)	61,5 mm
Diameter, locking plunger hole (D)	50 mm



Hydraulic attachment frame

OQL 410

OilQuick automatic quick coupler system, type OQL410, is available for large wheel loaders weighing **20-32 tonnes**. The new, considerably improved coupler generation is not fully backwards compatible with the older versions of OQL400. Contact us for more information.

The OQL410 couplers are now available in two different sizes: OQL410-1 and OQL410-2. All couplers have the same attachment interface and are compatible with Volvo's standard coupler for the L150–L220 and other equivalent machine models.

ADVANTAGES OF OILQUICK

- Switch hydraulic attachments in seconds.
- Switching attachments with OilQuick means no oil spills, sparing the environment and saving money!
- Motivates a higher hourly rate – gets the job done faster.
- Increases usability and makes your machine more versatile.
- Always the right attachment for the job.
- Invest in an OilQuick and spare your back and your knees.





TECHNICAL DATA OQL 410

The coupler has one hydraulic cylinder

Max. operating pressure (MPa)	35
Load holding/hose rupture valves	Yes
Piston/piston rod, diameter (mm)	60/40
Stroke length per cylinder side (mm)	135
Combined lock force at 10 MPa	28.3
Max. continuous operating pressure (MPa)	35

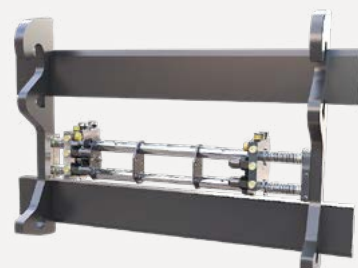
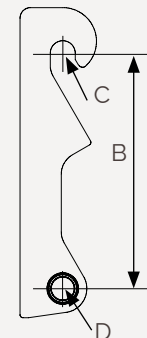
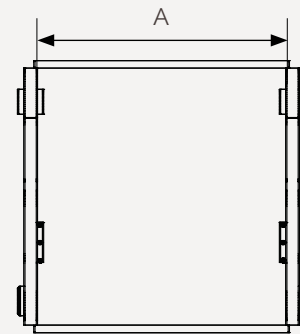
Leak-free steel quick couplings, OilQuick type

Coupling dimensions	1/2"	3/4"
Oil flow with 0.3 MPa pressure drop (L/min)	70	140
Max. continuous operating pressure (MPa)	35	35
Number of couplings	2	4
Electrical coupling option, 1/2"	Yes	

MEASUREMENT DATA ATTACHMENT FRAME

OQL 410

Inside measurement (A)	1000 mm
Height (B)	782 mm
Diameter, mounting hooks (C)	82 mm
Diameter, locking plunger hole (D)	75 mm



Hydraulic attachment frame

OQT

COUPLE HYDRAULIC ATTACHMENTS FROM THE CAB - IN SECONDS!

OilQuick is an advanced quick coupler system for forklift trucks and can be supplied in various models for machines from 1 to 9 tons.

The operator can change between various work tools within a few seconds, such as pallet forks with hydraulic tine adjustment, bale clamps, rotating bale clamps etc. You will therefore always have the right attachment for the job. The OilQuick system will not only make your forklift truck but also your company more flexible, competitive and cost effective.



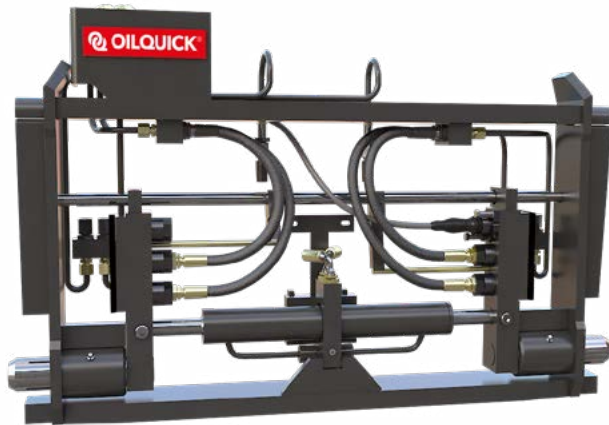
OQT 300i

OilQuick OQT 300i is an automatic quick coupler system for smaller forklift trucks that can couple hydraulic attachments directly from the cab.

ADVANTAGES OF OILQUICK

- Switch hydraulic attachments in seconds.
- Switching attachments with OilQuick means no oil spills, sparing the environment and saving money!
- Increases usability and makes your machine more versatile.
- Always the right attachment for the job.
- Invest in an OilQuick and spare your back and your knees.
- Motivates a higher hourly rate – gets the job done faster.





TECHNICAL DATA OQT 300I

The coupler has one hydraulic cylinder

Max. operating pressure (MPa)	35
Load holding/hose rupture valves	Yes
Piston/piston rod, diameter (mm)	45/25
Stroke length per cylinder side (mm)	115
Combined lock force at 10 MPa	16
Max. continuous operating pressure (MPa)	35

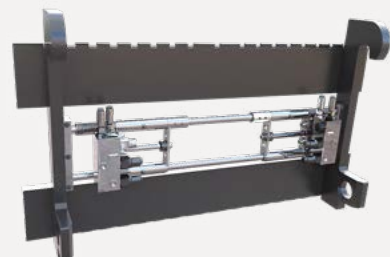
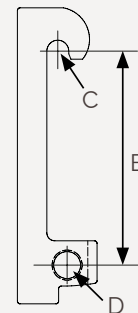
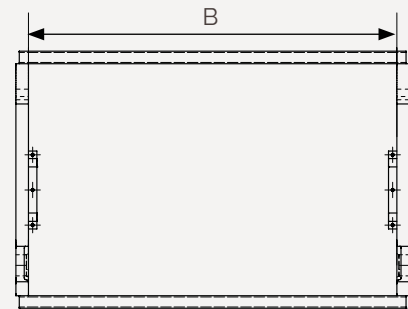
Leak-free steel quick couplings, OilQuick type

Coupling dimensions	1/2"
Oil flow with 0.3 MPa pressure drop (L/min)	60
Max. continuous operating pressure (MPa)	35
Number of couplings	6
Electrical coupling option, 1/2"	Yes

MEASUREMENT DATA ATTACHMENT FRAME

OQT 300i

Inside measurement (A)	880 mm
Height (B)	400 mm
Diameter, mounting hooks (C)	40 mm
Diameter, locking plunger hole (D)	50 mm



Hydraulic attachment frame

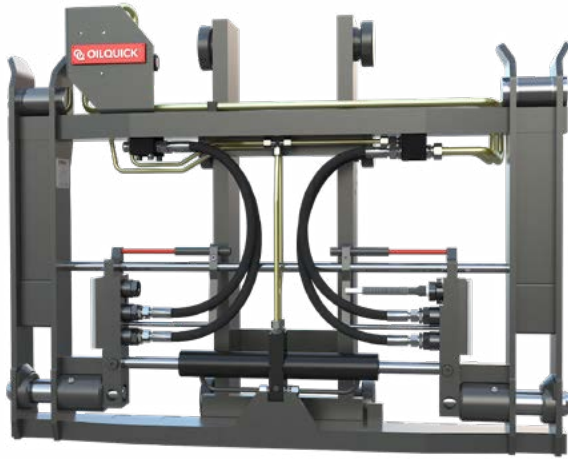
OQT 850i-55

OilQuick OQT 850i-55 is an automatic quick coupler system for medium-sized forklift trucks that can couple hydraulic attachments directly from the cab.

ADVANTAGES OF OILQUICK

- Switch hydraulic attachments in seconds.
- Switching attachments with OilQuick means no oil spills, sparing the environment and saving money!
- Increases usability and makes your machine more versatile.
- Always the right attachment for the job.
- Invest in an OilQuick and spare your back and your knees.
- Motivates a higher hourly rate – gets the job done faster.





TECHNICAL DATA OQT 850I-55

The coupler has one hydraulic cylinder

Max. operating pressure (MPa)	35
Load holding/hose rupture valves	Yes
Piston/piston rod, diameter (mm)	45/25
Stroke length per cylinder side (mm)	115
Combined lock force at 10 MPa	16
Max. continuous operating pressure (MPa)	35

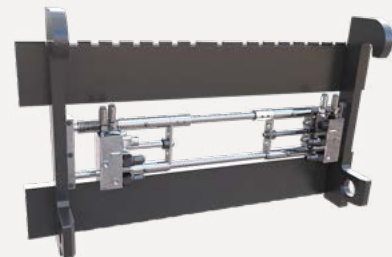
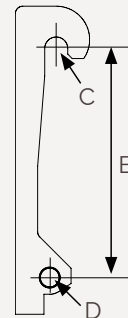
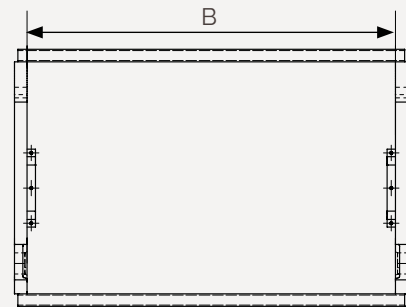
Leak-free steel quick couplings, OilQuick type

Coupling dimensions	1/2"
Oil flow with 0.3 MPa pressure drop (L/min)	60
Max. continuous operating pressure (MPa)	35
Number of couplings	6
Electrical coupling option, 1/2"	Yes

MEASUREMENT DATA ATTACHMENT FRAME

OQT 850i-55

Inside measurement (A)	960 mm
Height (B)	617 mm
Diameter, mounting hooks (C)	61,5 mm
Diameter, locking plunger hole (D)	50 mm



Hydraulic attachment frame

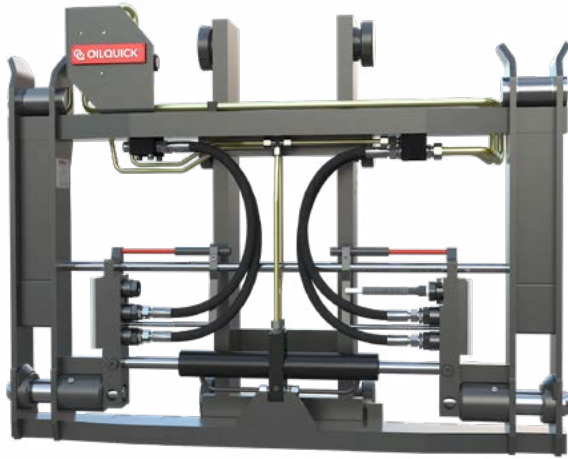
OQT 850i-90

OilQuick OQT 850i-90 is an automatic quick coupler system for large forklift trucks that can couple hydraulic attachments directly from the cab.

ADVANTAGES OF OILQUICK

- Switch hydraulic attachments in seconds.
- Switching attachments with OilQuick means no oil spills, sparing the environment and saving money!
- Increases usability and makes your machine more versatile.
- Always the right attachment for the job.
- Invest in an OilQuick and spare your back and your knees.
- Motivates a higher hourly rate – gets the job done faster.





TECHNICAL DATA OQT 850I-90

The coupler has one hydraulic cylinder

Max. operating pressure (MPa)	35
Load holding/hose rupture valves	Yes
Piston/piston rod, diameter (mm)	45/25
Stroke length per cylinder side (mm)	115
Combined lock force at 10 MPa	16
Max. continuous operating pressure (MPa)	35

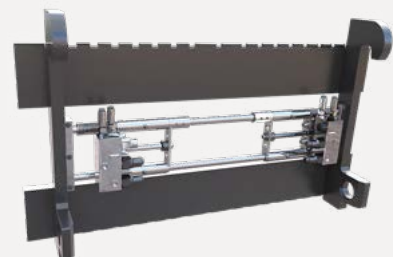
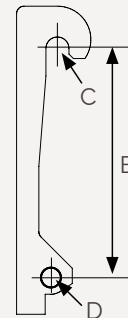
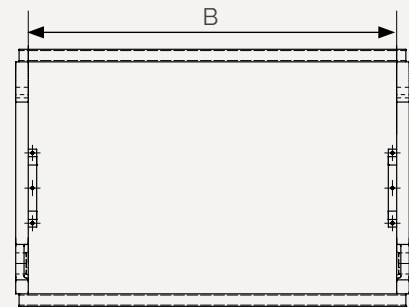
Leak-free steel quick couplings, OilQuick type

Coupling dimensions	1/2"
Oil flow with 0.3 MPa pressure drop (L/min)	60
Max. continuous operating pressure (MPa)	35
Number of couplings	6
Electrical coupling option, 1/2"	Yes

MEASUREMENT DATA ATTACHMENT FRAME

OQT 850i-90

Inside measurement (A)	960 mm
Height (B)	617 mm
Diameter, mounting hooks (C)	61,5 mm
Diameter, locking plunger hole (D)	50 mm



Hydraulic attachment frame

OQC

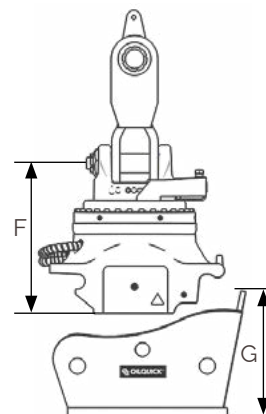
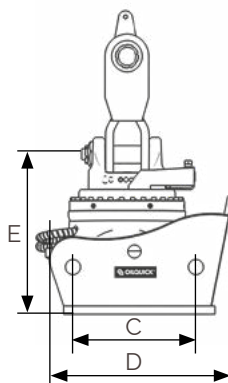
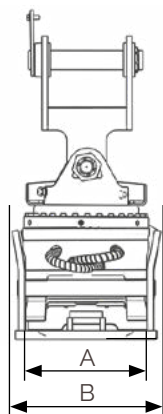
Developed by OilQuick, the OQC system provides unique advantages for contractors in material handling. The OQC is an OilQuick suspended quick coupler, which is primarily designed for use on loading cranes and other handling equipment. Basically, the system consists of an extremely rugged 360° rotator mounted on our fully hydraulic, tried-and-tested quick coupler. The OQC unit is suspended from the handling equipment's stick.

Electric swivel comes as standard, which allows the use of a magnetic plate.



TECHNICAL DATA

Model	Rotator	Dimensions (mm)							Weight (kg)			Max. lift capacity (t)
		A	B	C	D	E	F	G	Coupler	Rotator	Adapter	
OQC65	XR400	441	602	530	802	690	635	504	225	250	213	20 t
OQC70/55	XR600	551	754	600	932	750	697	631	370	320	344	30 t



Model	Max. no. of couplings		Electrical couplings		Max. operating pressure	Rotation max. working pressure
	1"	3/4"	High power 65 A	Control power 24 V, 10 pole		
OQC65	-	3	Option	Option	350 bar	250 bar
OQC70/55	2	1	Option	Option	350 bar	250 bar

Weight without grapple suspension. Subject to change without notice.

GRAB JOHN

Grab John, the bucket with the extra thumb grip!

Today's modern excavators offer digging power, lifting power, breaking power and mobility. They do, however, lack something important, namely GRIPPING POWER.

The Grab John bucket is made complete by its "thumb" grip, which is always in place and on hand. What's more, when retracted it does not interfere with normal excavator manoeuvring. Its high gripping power allows you to grab, lift, raise, lower and manoeuvre heavy and cumbersome objects directly from the cab. This increases safety as chains are no longer needed. Grab John is the perfect problem solver.

Grab John buckets are equipped with integrated hose rupture valves for maximum safety. The valves are fitted with a choke function to prevent you from overloading the grapple tines.

TECHNICAL DATA GRAB JOHN - POLE PLANTING BUCKETS

Type	Bucket width (mm)	Volume (L)	Max. opening	Suitable for machines weighing	Bucket weight (kg)
GJ 1A	620 mm	70 L	370 mm	8-10 t	300 kg
GJ 1B	620 mm	70L	370 mm	3-5 t	250 kg
GJ 5	800 mm	250 L	550 mm	10-25 t	680 kg
GJ 15	670 mm	150 L	440 mm	12-25 t	385 kg



OQC40M

A giant step forwards in development for Crane couplers.

OilQuick OQC 40M is a giant step forwards in development work to make switching attachments on crane couplers much easier.

In just a few seconds the operator can couple the OQC 40M to the crane and then switch between many types of mechanical and hydraulic attachment. Attachments such as grapple buckets, pallet forks, sweepers, earth borers, timber grapples, hoisting hooks and clamp units for blocks and bales are just a few moments away from being attached and ready to use.

TECHNICAL DATA OQC 40M - ATTACHMENT COUPLER

Type	Mechanical	Hydraulic	With hook
Height (mm)	250 mm	250 mm	355 mm
Width (mm)	300 mm	300 mm	300 mm
Weight (kg)	30 kg	31 kg	40 kg
Length (mm)	480 mm	480 mm	485 mm
Total height (uncoupled)	575 mm	575 mm	680 mm
Total height (coupled)	590 mm	590 mm	695 mm

TECHNICAL DATA OQC 40M - QUICK COUPLER

Max. lifting capacity	4500 kg
Max. operating pressure	250 bar
Width	240 mm
Height (without rotator)	170 mm
Length	400 mm
Weight (without rotator)	30 kg



Quick coupler

Mechanical attachment component

Hydraulic attachment component

Hook adapter

OQLS

Safe tool change with the oq-locksupport

OilQuick LockSupport (OQLS) is a newly developed and user-friendly operator aid for safe and secure attachment switching on excavators. OQLS is available for all nine sizes of OilQuick's fully automatic attachment coupler.

Nowadays modern excavators are equipped with hydraulic quick couplers and use a number of buckets and attachments, which in many cases are switched several times per hour and day.

There is always an element of risk when switching buckets and attachments. Dropped and swinging buckets can accidentally cause either severe personal injury or death. The reason for dropped buckets in most cases is operator-related and can depend on many factors including work stress, non-standardised lock manoeuvring (buttons and controls with different functions, different placement from machine to machine), difficulty in determining whether the attachment is aligned correctly and uncertainty in the position of the locking plungers. OQLS solves all these problems and gives the operator safe and secure support for the right decisions when switching buckets and attachments.

Deliberate, controlled coupling process.

- The control panel guides the operator through the process.
- Intuitive, straightforward and user friendly.
- Audible and visual warnings in hazardous situations.

Sensor detection of attachment pin and lock cylinder position.

- Different symbols for pin and locking plunger.

Automatic activation of the machine's hydraulics. (optional).

- Activates the lock function automatically without the need to use another hydraulic function.

The system logs all events, the 32 most recent in chronological order.

The system is self-diagnostic and warns of system faults.



OEM

In addition to our own product range, in recent years we have also begun collaborating with other companies to jointly develop a number of OEM products: OQB, a boom coupler, OQC, a crane coupler, and OQS, a stick coupler.



OQB

Rapid automatic switching between demolition sticks and standard excavation units.

In collaboration with Kiesel GmbH, Baienfurth, Germany, we have developed a revolutionary quick coupler system for excavators for rapid automatic switching between demolition sticks of different lengths and standard excavation units. The coupler system is available in four different sizes and for excavators between 25 and 100 tonnes. Up to 30 hydraulic and electrical connectors are available.



OQS

Forget everything you know about standard quick coupler systems.

With OilQuick's stick-mounted quick coupler system a steel shears attachment is coupled in 15-20 seconds directly from the cab! The coupler also enables rapid switching between different types of excavation and material handling sticks. The unique stick-mounted quick coupler system is developed by OilQuick AB in collaboration with Kiesel GmbH and Fuchs GmbH, Germany.

Additionally, the system can also be equipped with a 220 volt heavy current coupling for powering electromagnets. OilQuick is the perfect solution for scrapyards, timber yards, ports, demolition sites, recycling facilities and more.

SYSTEM SOLUTION

With our tiltrotator equipped with the OilQuick sandwich solution the operator can tilt, rotate and switch the tiltrotator for a bucket or other hydraulic attachment under the tilt – quickly and simply and without having to leave the cab. This takes tiltrotators to a new level!

OilQuick also offers a comprehensive range of attachments and accessories for tiltrotators. Contact us and we will deliver a complete package with attachment coupler, tiltrotator, control system, attachments and accessories. We help you choose the right attachments and the right combinations.



CE-MARKING

TECHNICAL REQUIREMENTS

- The components in OilQuick quick couplers and attachment adapters are designed for a maximum of 350 bar continuous system pressure. In the case of OilQuick tiltrotators the maximum operating pressure is 250 bar.
- The quick couplers' hydraulic lock is regulated by two parallel-mounted hydraulic cylinders with integrated hose rupture valves. The lock hydraulics must be fitted in a prioritised circuit in the excavator's hydraulic system so that oil is regularly supplied to the lock cylinder's lock side and continually loads the coupler's locking plungers. See the special installation instructions in the product manual.
- Measurements, weights and other technical product data are presented elsewhere in this price guide or in the applicable product sheets.

SALES AND DELIVERY TERMS

- All prices are stated excluding VAT, packaging & shipping.
- For couplers and attachment adapters not included in the price lists, please contact us for a quotation.
- OilQuick quick couplers are delivered with the fittings specified elsewhere in this price guide.
- Prices do not include the fitting of quick couplers, hydraulics and attachment adapters to machines, buckets and hydraulic attachments. A separate quotation for such services can be provided upon request.
- Delivery terms: Ex-factory, Hudiksvall, Sweden or another manufacturing facility in Sweden.
- Payment terms: 30 days net.
- Manufacturer's warranty: 24 months.
- Cancellation of the production of non-standard products may incur a cancellation fee.
- The general terms and conditions of the Swedish T&C standard "Maskin - 2003" apply.
- OilQuick AB reserves the right to adjust product prices and technical specifications without prior notice.

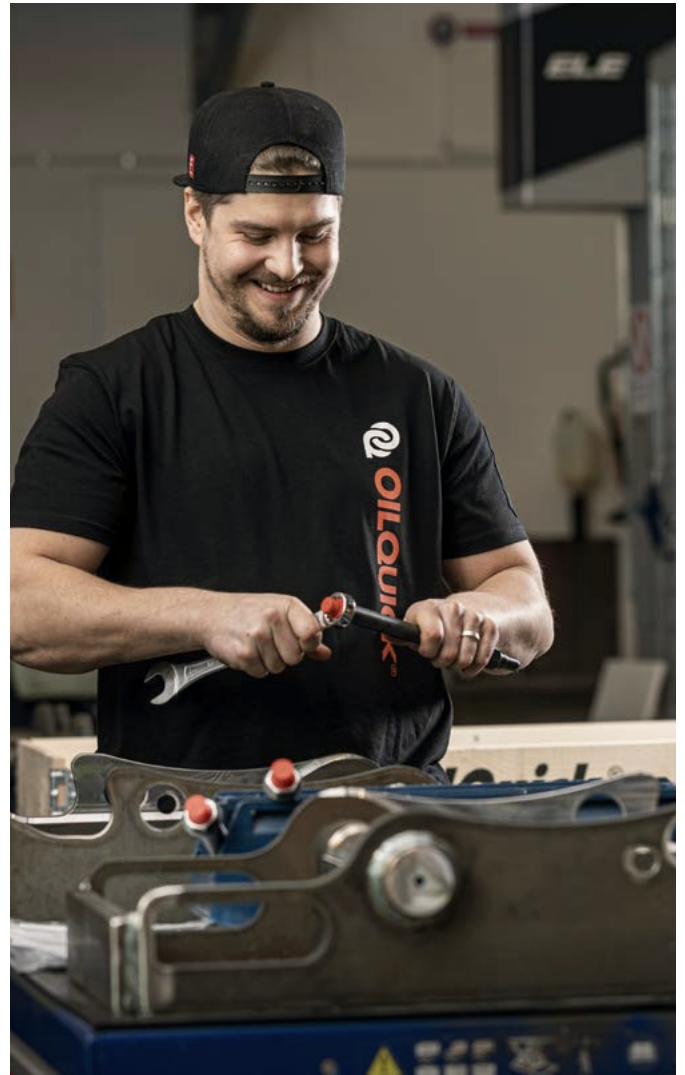
Specify when ordering:

- Type of excavator, stick & mount.
- Applicable bucket angle/bucket manufacturer.
- Specify hydraulic attachments (manufacturer and type designation), number of hydraulic functions and requisite max. oil flow for each circuit.
- Electrical connector requirements, number of poles, specify type of connector on both machine and attachment.
- If to be used together with a tiltrotator, specify model and control system.



SERVICE

As an OilQuick customer you always receive service of a high standard. Our trained service technicians have extensive knowledge of your particular coupler or attachment and have access to the best tools for the job. Our goal is customer satisfaction, so please contact us if you have any questions and we will help you to the best of our ability!

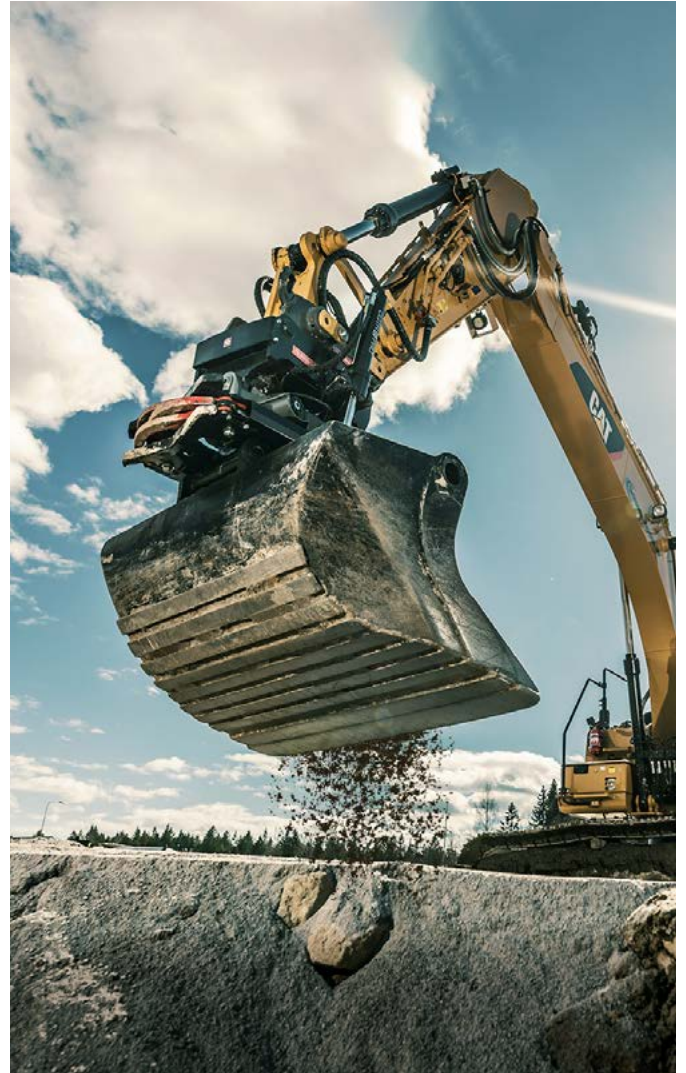


QUALITY

In order to reach our goals in quality we follow our quality policy. This means that we shall provide the market with systems for automatic attachment switching for different tool carriers and always fulfil entered agreements and deliver our systems with the right quality.

By the right quality we mean:

- Specifying all jobs as regards the requirements to be fulfilled.
- Conducting manufacturing and assembly in such a way that the requirements can be fulfilled.
- Delivering at the promised time.
- Formulating annual measurable goals for quality.
- Manufacturing in a rational manner without post-production adjustments or rejects.
- Continually developing the business and our management system based on customer and employee feedback.



ISO 9001

ISO 9001 is an internationally accepted standard for establishing quality that is used by millions of organisations throughout the world. It is based on a number of fundamental principles and mostly involves the organisation having an approach based on customer needs and reviewing internal work methods to reduce costs. Certification centres on the fulfilment of 58 requirements, which in turn are based on eight principles. The certificate is valid for a fixed period and is checked every year by an independent body.

ISO 9001 – eight principles

- Leadership
- Customer focus
- Process approach
- System approach to management
- Involvement of people
- Factual approach to decision making
- Continual improvement
- Mutually beneficial supplier relationships

ENVIRONMENT

OilQuick quick coupler systems for excavators, wheel loaders, forklift trucks, cranes and material handling machines are all equipped with quick couplings of the flat-face type. Couplings are leak-free and contribute to a greener work site.

Since you as an operator no longer need to couple hydraulic hoses by hand, the risk of health problems is minimised, as are allergies and breathing difficulties, which are common side effects of regular contact with hydraulic oil.

CONTACT

To find your local OilQuick supplier please visit our website or send us an email, information@oilquick.com.

Want to learn more about the OilQuick system? Check out our social media channels.



www.facebook.com/ab.oilquick



[instagram.com/oilquick.ab](https://www.instagram.com/oilquick.ab)



www.youtube.com/user/oilquick

